

# H&S

# PARTS BOOK

## S2117 SPREADER



Revision #03  
Starting Ser. #811PD17034

Part #72935  
HSMFG0318

**2608 S. HUME AVE. , MARSHFIELD, WI 54449**  
**(715) 387-3414 FAX (715) 384-5463**  
**[www.hsmfgco.com](http://www.hsmfgco.com)**

# CONTENTS

Instructions for Ordering Parts .....	1
Figure 1 - Beater and Pan Assembly .....	2-3
Figure 2 - Hub, Spindle & Box Parts .....	4-5
Figure 3 - Front Shields & Drive Assembly .....	6-7
Figure 4 - Back Shields & Drive Assembly .....	8-11
Figure 5 - Optional Hydraulic Endgate .....	12-13
Figure 6 - Apron Chain Assembly .....	14
Figure 7 - Optional Hydraulic Endgate Cylinder .....	15
Figure 8 - Gearbox .....	16-19
Figure 9 - PTO .....	20
Figure 10 - Optional Top Beater .....	21
Parts Notes .....	22

# **INSTRUCTIONS FOR ORDERING PARTS**

All service parts should be ordered through your authorized H&S dealer. He will be able to give you faster service if you will provide them with the following:

1. Model & Serial Number - Both can be located on the side of the center bearing post above jack mount.
2. All references to left or right apply to the machine as viewed from the rear.
3. Parts should not be ordered from illustration only. Please order complete part number.
4. If your dealer has to order parts - give shipping instructions:

VIA truck - large pieces (please specify local truck lines)

VIA United Parcel Service (include full address)

H&S MFG. CO. INC.	
MARSHFIELD, WIS.	
MOD. NO.	<input type="text"/>
SER. NO.	<input type="text"/>
DESCR.	<input type="text"/>

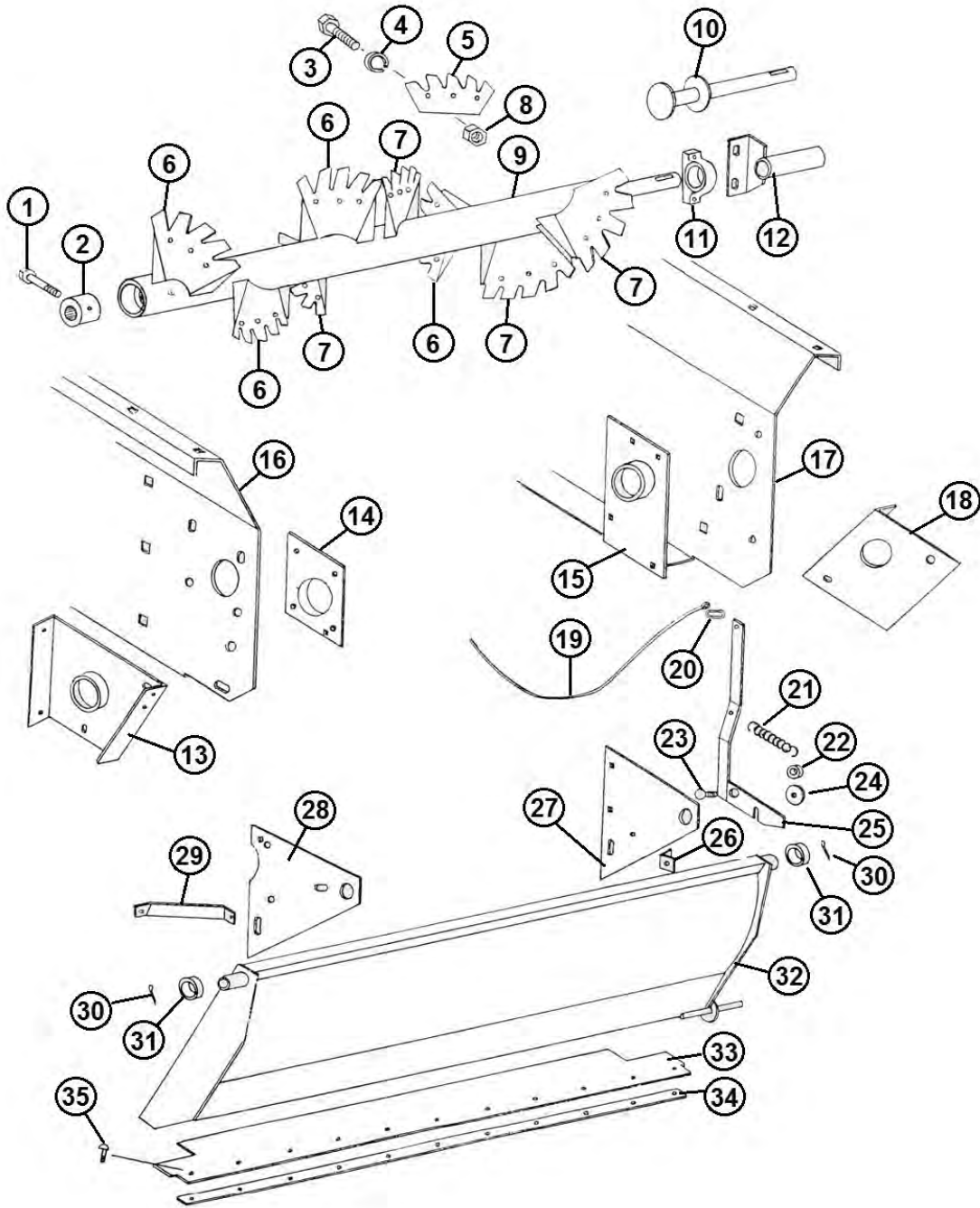
PLEASE RECORD NUMBERS FOR YOUR UNIT FOR QUICK REFERENCE

## **ABOUT IMPROVEMENTS**

H&S IS CONTINUALLY STRIVING TO IMPROVE IT'S PRODUCTS

We must therefore, reserve the right to make improvements or changes whenever it becomes practical to do so, without incurring any obligation to make changes or additions to the equipment previously sold.

**FIGURE 1**  
**BEATER AND PAN ASSEMBLY**

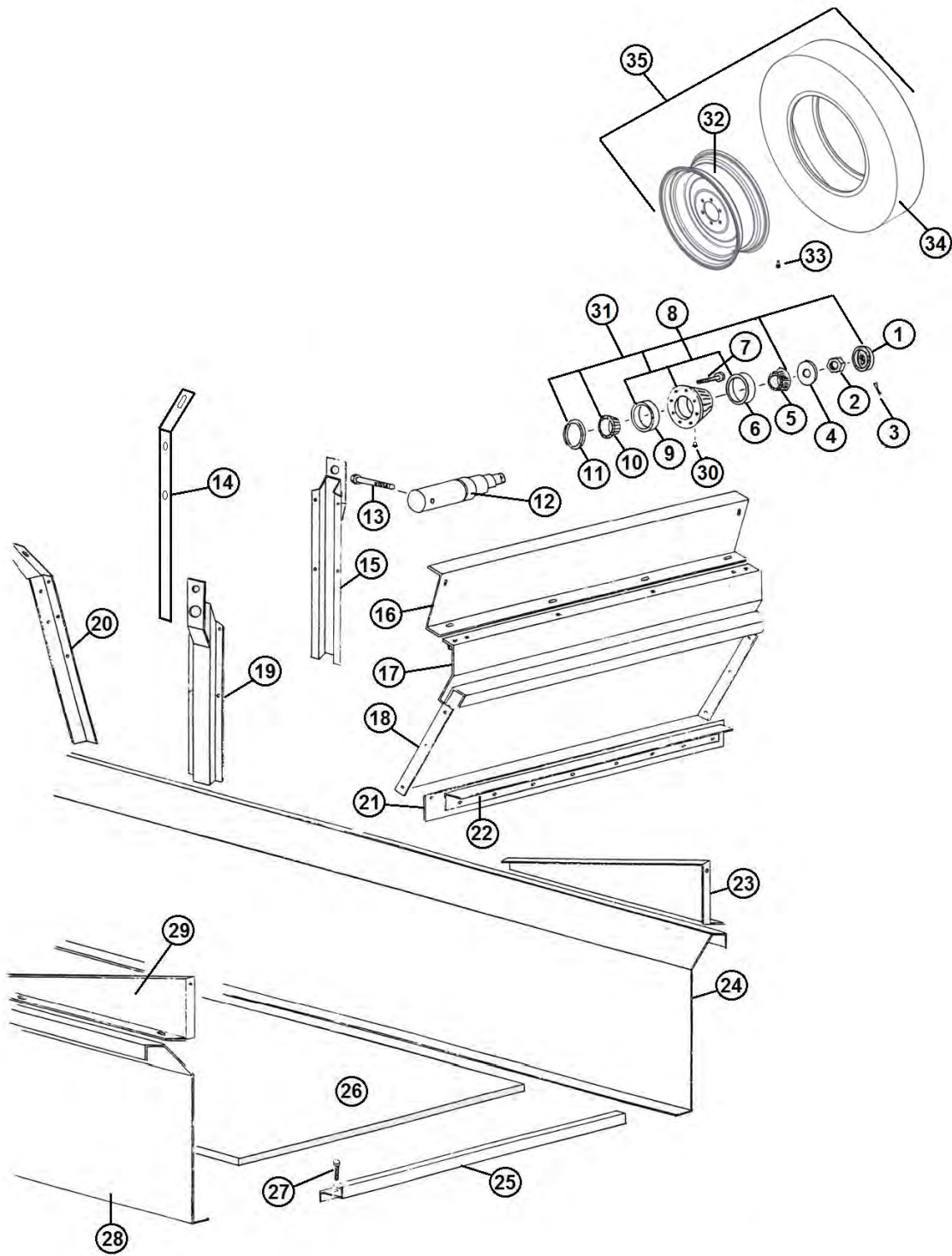


# FIGURE 1

## BEATER AND PAN ASSEMBLY

<u>ITEM</u>	<u>QTY</u>	<u>PART #</u>	<u>DESCRIPTION</u>
1	1	YBHH10130	BOLT, 5/16" X 5" GR. 5
2	1	23N2	SPLINED BEATER INSERT
3	24	YBHH16045	BOLT, 1/2" X 1-1/4" GR. 5
4	24	YWLO16005	WASHER, LOCK, 1/2"
5	8	17G2	REPLACEMENT BEATER COMB
6	4	17G3	LH BEATER BLADE
7	4	17G4	RH BEATER BLADE
8	24	YNTL16005	HEX NUT, TOP LOCK, 1/2"-13
9	4	17G5	BEATER
10	4	17G6	BEATER STUB SHAFT
11	4	17G7	PILLOW BLOCK BEARING
12	4	17G8	STUB SHAFT SHIELD
13	1	17G9	LH DRIVE SHAFT MOUNT
14	1	17G10	LH ANTI-WRAP GUARD
15	1	17G11	RH ANTI-WRAP GUARD
16	1	17G12	LH SIDE PANEL
17	1	17G13	RH SIDE PANEL
18	1	17G14	RH DRIVE SHAFT MOUNT
19	1	17G15	PAN TRIP ROPE
20	1	R31	CLIP
21	1	R27	SPRING
22	1	23N23	SPACER
23	1	YBCR16010	CARR. BOLT, 1/2" X 1-1/2" GR. 5
24	1	YWFL16005	WASHER, FLAT, 1/2" USS
25	1	17G16	PAN TRIP LEVER
26	1	R26	ANGLE
27	1	17G17	RH PAN SUPPORT
28	1	17G18	LH PAN SUPPORT
29	1	17G19	PAN BRACE
30	2	YPCT06020	COTTER PIN, 3/16" X 2"
31	2	F112	SPACER
32	1	17G20	PAN
33	1	17G21	PAN RUBBER FLAP
34	1	17G22	PAN STRAP
35	11	YBCR08010	CARR. BOLT, 1/4" X 1-1/2"

**FIGURE 2**  
**HUB, SPINDLE & BOX PARTS**



## FIGURE 2

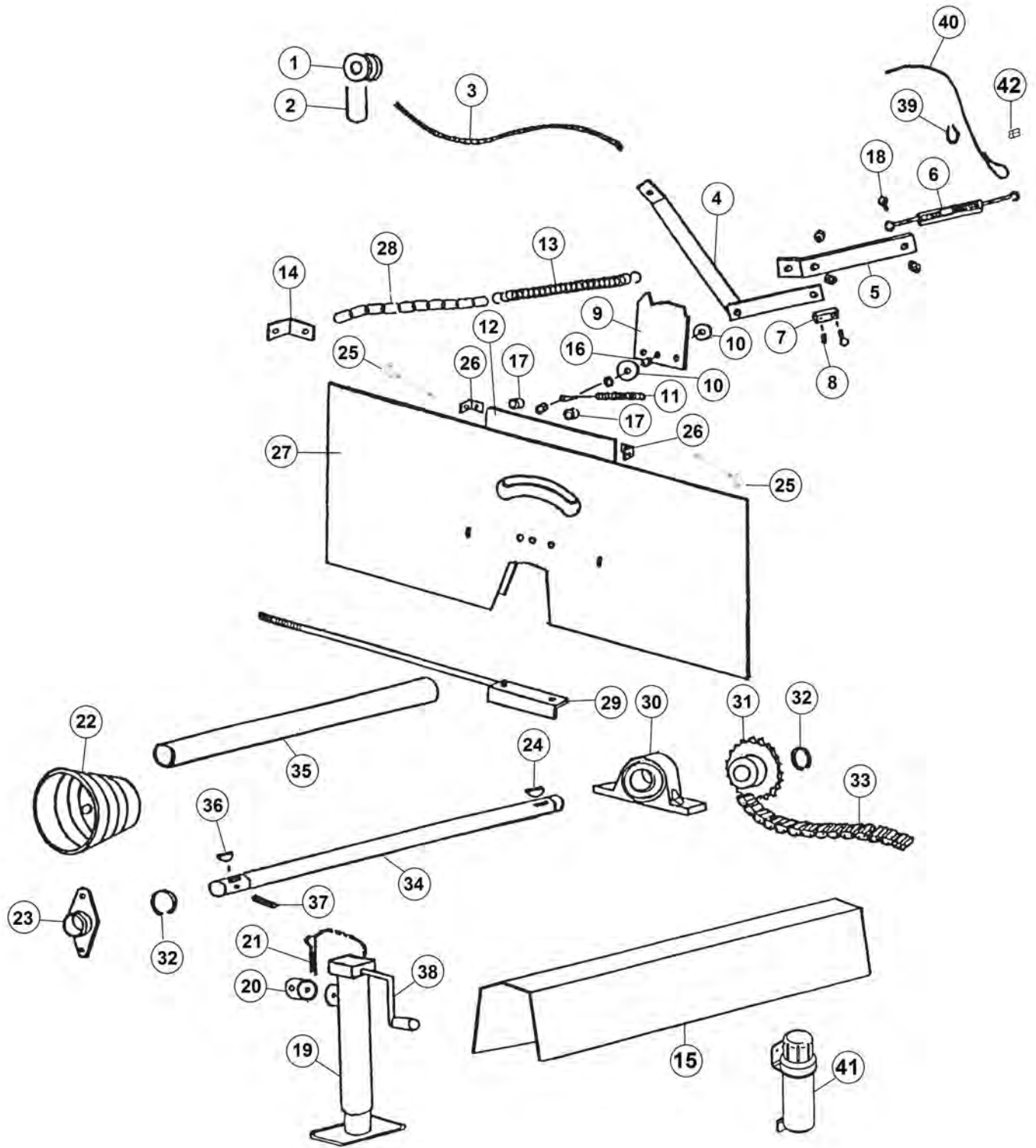
### HUB, SPINDLE & BOX PARTS

<u>ITEM</u>	<u>QTY</u>	<u>PART#</u>	<u>DESCRIPTION</u>
1	2	17G144	HUB CAP
2	2	YNSL28005	NUT, SLOT, 7/8-14, NA, G2, NF
3	2	YPCT05020	COTTER PIN, 5/32 X 1-3/4
4	2	YWFL28005	WASHER, FLAT, 7/8 USS, ZINC
5	2	17G145	TAPERED ROLLER BEARING, 1.249 BORE
6	2	17G146	OUTER RACE
7	12	YBWL16005	BOLT, WHEEL, 1/2-20X1, GR5, ZC
8	2	75974	ASSM, HUB 783, WITH RACES
9	2	17G149	INNER RACE
10	2	17G150	INNER BEARING
11	2	17G151	GREASE SEAL
12	1	17G152	RH SPINDLE
*	1	17G153	LH SPINDLE
13	2	YBHH16130	BOLT, HEX, 1/2-13 X 4, G5, ZC
14	1	17G24	ASSY, LH BACK STAKE
15	1	17G25	ASSY, LH SIDE STAKE
16	1	17G26	FRONT SPLASH
17	1	17G27	FRONT FLARE
18	1	17G28	FRONT PANEL
19	1	17G189	RH SIDE STAKE
20	1	17G29	ASSY, RH REAR STAKE
21	1	17G30	FRONT RUBBER
22	1	17G31	ANGLE FOR RUBBER
23	1	17G32	SPLASH GUARD SIDE LH
24	1	17G12	LH SIDE PANEL
25	3	17G33	FRONT POLY FLOOR HOLD DOWN
26	1	17G158	POLY PLYWOOD, 175 BU FLOOR, 7 PLY - 5/8" X 54" X 120"
27	1	YBCR12015	BOLT, CARR, 3/8-16 X 1-1/2, G5, ZC
28	1	17G13	RH SIDE PANEL
29	1	17G36	SPLASH GUARD SIDE RH
30	2	54595	ZERK, 1/8-27 NPT
31	2	17G148	ASSY, HUB
32	2	55621	WHEEL, 22.5X8.25, 6.00BC OFF-WHITE
33	2	72438	VALVE STEM, 1-1/2"
34	2	UR19	TIRE, 295/75R22.5, RECAP, HIGHWAY TREAD
35	2	69974	10R-22.5 X 8.25, 6.00 BC, O

**NOTE: \* MEANS NOT SHOWN**

# FIGURE 3

## FRONT SHIELDS & DRIVE ASSEMBLY





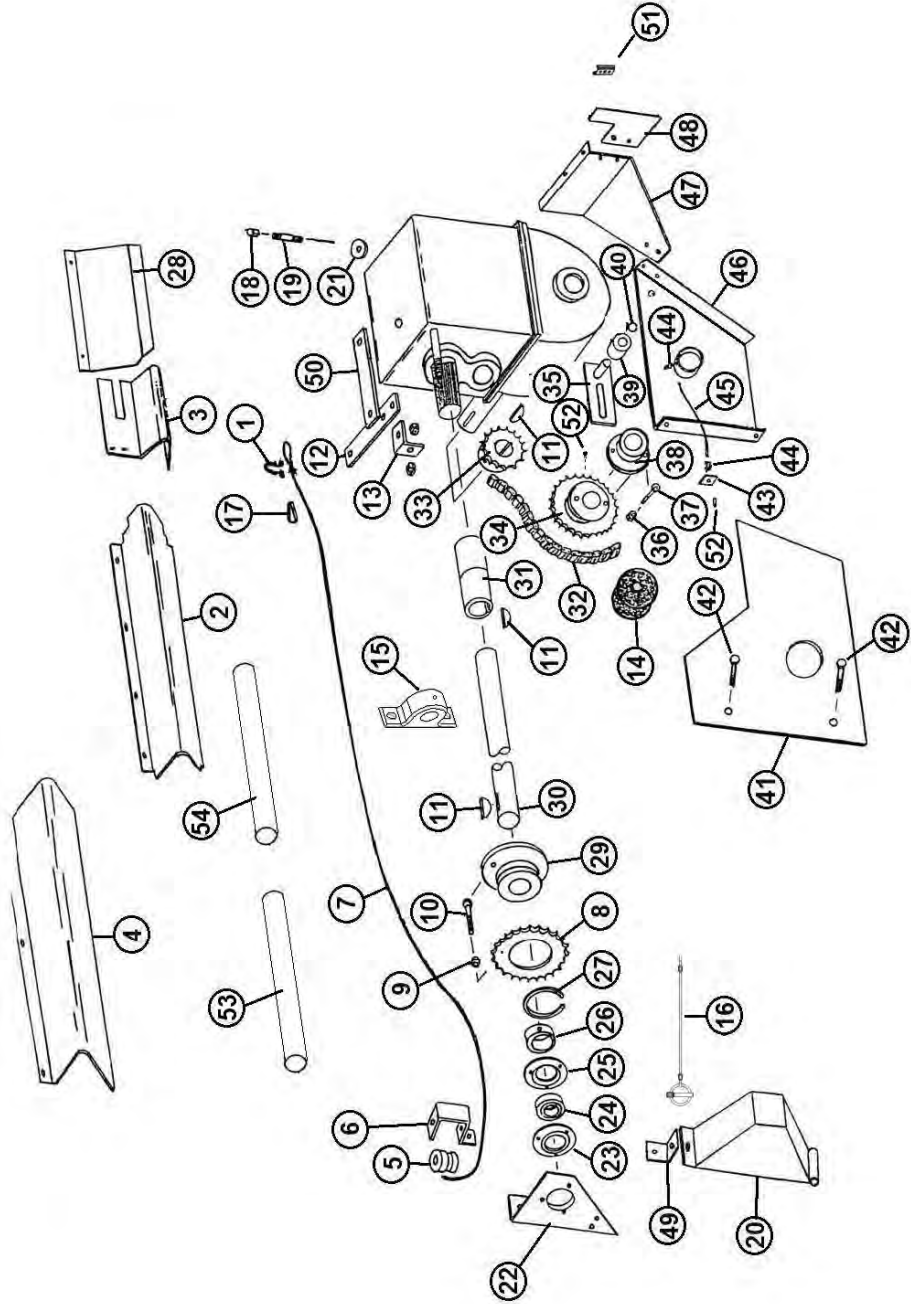
## FIGURE 3

### FRONT SHIELDS & DRIVE ASSEMBLY

<u>ITEM</u>	<u>QTY</u>	<u>PART #</u>	<u>DESCRIPTION</u>
1	1	F33	CABLE GUIDE
2	1	YBPU08005	PIPE U BOLT, 1/4"-20 X 3/4" PIPE, 1-1/4" ID, 2-1/4" IL, 1-1/4" THREAD
3	1	23N183	ROPE
4	1	23N280	SHIFT LEVER
5	1	23N281	PIVOT LINK
6	1	F84	TURNBUCKLE
7	1	23N282	SHIFTER DOG
8	2	G89	GREASE ZERK
9	1	23N283	STOP BRACKET
10	2	YWCU12005	WASHER, CUSTOM, FLAT, .435"
11	1	23N284	SHIFTER DOG SPRING
12	1	17G172	FRONT PANEL
13	1	10R14	SPRING
14	1	17G177	SPRING MOUNT ANGLE
15	1	17G157	FRONT SHAFT SHIELD
16	2	23N297	TUBE, RND, STR, 0.75 X 0.19 X 0.21, DOM
17	2	ST81	SPACER
18	1	YBCR12010	CARR. BOLT, 3/8" X 1" GR. 5
19	1	12N116	JACK
20	1	12N121	JACK MOUNT
21	1	12N117	JACK PIN
22	1	17G45	PTO SHIELD
23	1	12N29	BEARING
24	1	5B9	3/8" X 1-1/4" WOODRUFF KEY
25	2	S122	LYNCH PIN, 1/4" X 1-1/2"
26	2	R26	SHIELD BRACKET
27	1	17G173	FRONT POLY SHIELD
28	1	76054	CHAIN
29	1	17G48	TIGHTENER ROD
30	1	17G7	PILLOW BLOCK BEARING
31	1	23N70	25T SPROCKET
32	2	F73	SNAP RING
33	1	17G49	#60 CHAIN 116 PITCHES
34	1	17G50	FRONT SHAFT
35	1	17G179	FRONT SHAFT PVC GUARD
36	1	5B10	1/4" X 1" WOODRUFF KEY
37	1	YPEX10020	EXPANSION PIN, 5/16" X 2-1/4"
38	1	12N12	HANDLE
39	1	ES14	THIMBLE
40	1	17G174	CABLE
41	1	S522	MANUAL HOLDER
42	1	71279	SLEEVE, 0.13 X 0.63

**NOTE: \* MEANS NOT SHOWN**

**FIGURE 4**  
**BACK SHIELDS & DRIVE ASSEMBLY**

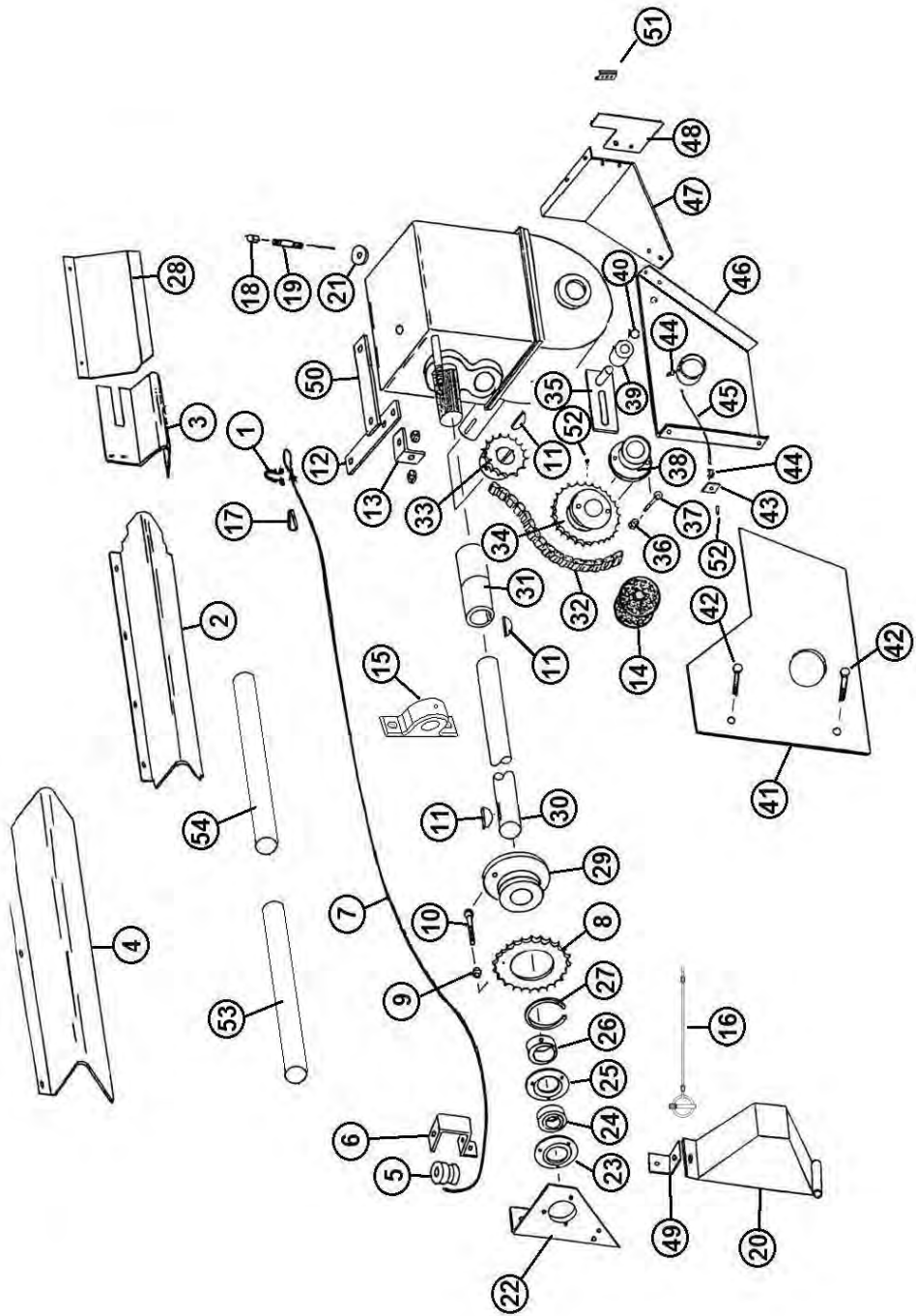


## FIGURE 4

### BACK SHIELDS & DRIVE ASSEMBLY

<u>ITEM</u>	<u>QTY</u>	<u>PART #</u>	<u>DESCRIPTION</u>
1	1	BFR220	CABLE CLAMP
2	1	17G52	BACK SIDE SHIELD
3	1	17G175	COUPLER SHIELD
4	1	17G54	FRONT SIDE SHIELD
5	1	F33	SIDE CABLE GUIDE
6	1	17G55	ROPE GUIDE BRACKET
7	1	17G40	CABLE
8	1	23N191	30T SPROCKET
9	1	YNTL10005	HEX NUT, TOP LOCK, 5/16"-18
10	1	YBHH10030	BOLT, 5/16" X 1-1/2" GR. 5
11	3	5B9	3/8" X 1-1/4" WOODRUFF KEY
12	1	23N290	SHIFTER ROD LEVER SHIFTER
13	1	23N291	ROD ANGLE
14	1	23N258	CHAIN OILER
15	1	12N36	COMP. BEARING ASSM.
16	1	S122	LANYARD, CLIP PIN CABLE
17	1	ES14	LOOP
18	1	17G58	VENT CAP
19	1	23N288	PIPE NIPPLE
20	1	17G76	SHIELD
21	1	17G61	WASHER
22	1	17G62	BEARING PLATE
23	1	F14	BEARING FLANGE
24	1	12N122	BEARING WITH LOCK COLLAR
25	1	F114A	FLANGE
26	1	F16	LOCK COLLAR
27	1	23N189	SNAP RING

**FIGURE 4**  
**BACK SHIELDS & DRIVE ASSEMBLY**



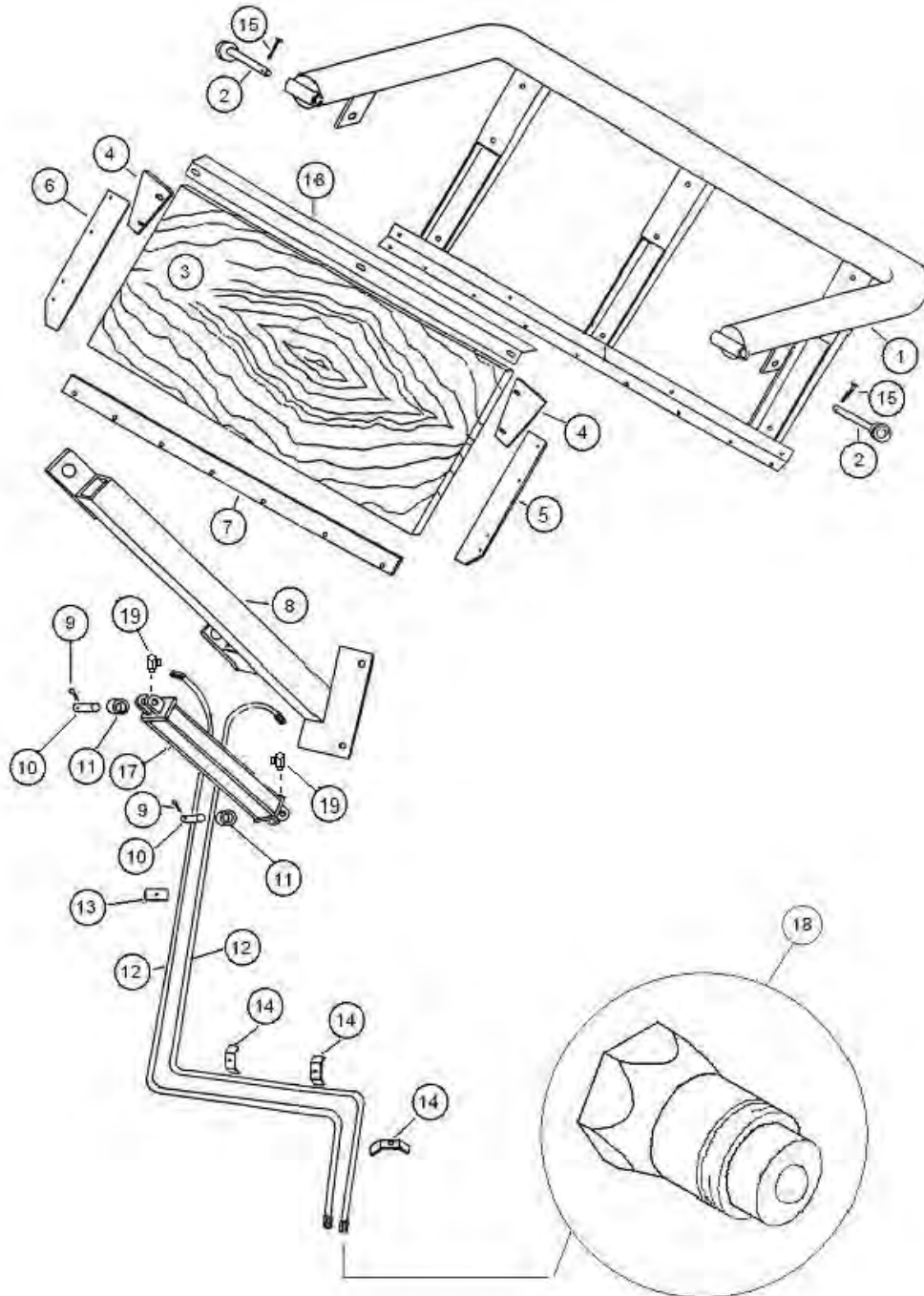
## FIGURE 4

### BACK SHIELDS & DRIVE ASSEMBLY

<u>ITEM</u>	<u>QTY</u>	<u>PART #</u>	<u>DESCRIPTION</u>
28	1	17G176	SHIFTER SHIELD
29	1	23N190	SHEAR HUB
30	1	17G64	SIDE SHAFT
31	1	17G65	COUPLER
32	1	17G66	#60 CHAIN 53 PITCHES
33	1	17G67	WORM GEAR SPROCKET
34	1	17G68	SHEAR HUB SPROCKET
35	1	17G69	CHAIN TIGHTENER BRACKET
*	1	17G70	COMPLETE TIGHTENER
36	1	YNL10005	HEX NUT, TOP LOCK, 5/16"-18
37	1	YBHH10030	BOLT, 5/16" X 1-1/2" GR. 5
38	1	17G71	SHEAR HUB
39	1	23N238	CHAIN TIGHTENER ROLLER
40	1	10R32	SNAP RING
41	1	17G72	BACK POLY SHIELD
42	2	12V3	5/16" SELF-TAPPING BOLTS
43	1	16V9	GREASE ZERK BLOCK
44	2	S47	GREASE LINE FITTING
45	1	17G73	GREASE LINE
46	1	17G9	LH DRIVE SHAFT MOUNT
47	1	17G74	GEARBOX BRACE
48	1	17G75	SMV BRACKET
49	1	23N242	SHIELD ANGLE
50	1	23N289	SHIFTER ROD LEVER FOLCRUM
51	1	F97	SMV BRACKET
52	1	G89	STRAIGHT ZERK 1/4-28X90
53	1	32058	#1 SIDE SHAFT GUARD - FRONT
54	1	32057	#2 SIDE SHAFT GUARD - BACK

**NOTE: \* MEANS NOT SHOWN**

**FIGURE 5**  
**OPTIONAL HYDRAULIC ENDGATE**



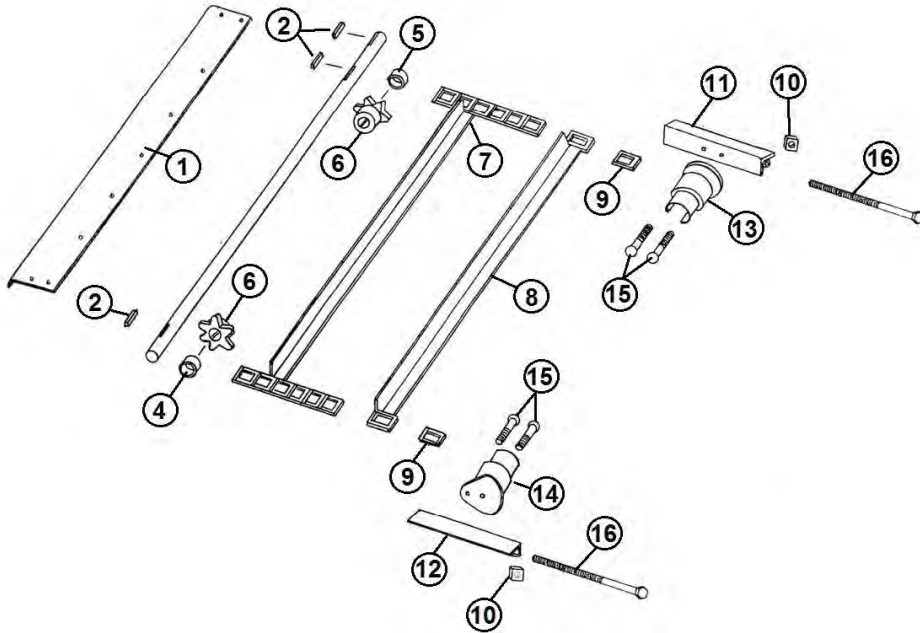
## FIGURE 5

### OPTIONAL HYDRAULIC ENDGATE

<u>ITEM</u>	<u>QTY</u>	<u>PART #</u>	<u>DESCRIPTION</u>
1	1	17G77	TAILGATE FRAME
2	2	17G78	TAILGATE PIN
3	1	17G79	TAILGATE PLYWOOD
4	2	17G80	TAILGATE CORNER
5	1	17G81	LH SIDE RUBBER
6	1	17G82	RH SIDE RUBBER
7	1	17G83	BOTTOM RUBBER
8	1	17G84	TAILGATE MOUNTING TUBE
9	2	YPCT07005	COTTER PIN, 7/32" X 2 " CYLINDER
10	2	23N107	PIN
11	2	K132	SPACER
12	2	23N302	22' HOSE
13	1	17G87	HOSE BRACKET
14	3	23N67	HOSE BRACKET
15	2	YBHH10080	BOLT, 5/16" X 2-1/2" GR. 5
16	1	17G160	TAILGATE PLYWOOD HOLD DOWN
17	1	56015	HYDRAULIC CYLINDER
18	2	DWM205	MALE QUICK COUPLER
19	2	DWM110	ADAPTER, 3/8" MALE TO 3/8" FEMALE, 90 DEG. SWIVEL

# FIGURE 6

## APRON CHAIN ASSEMBLY

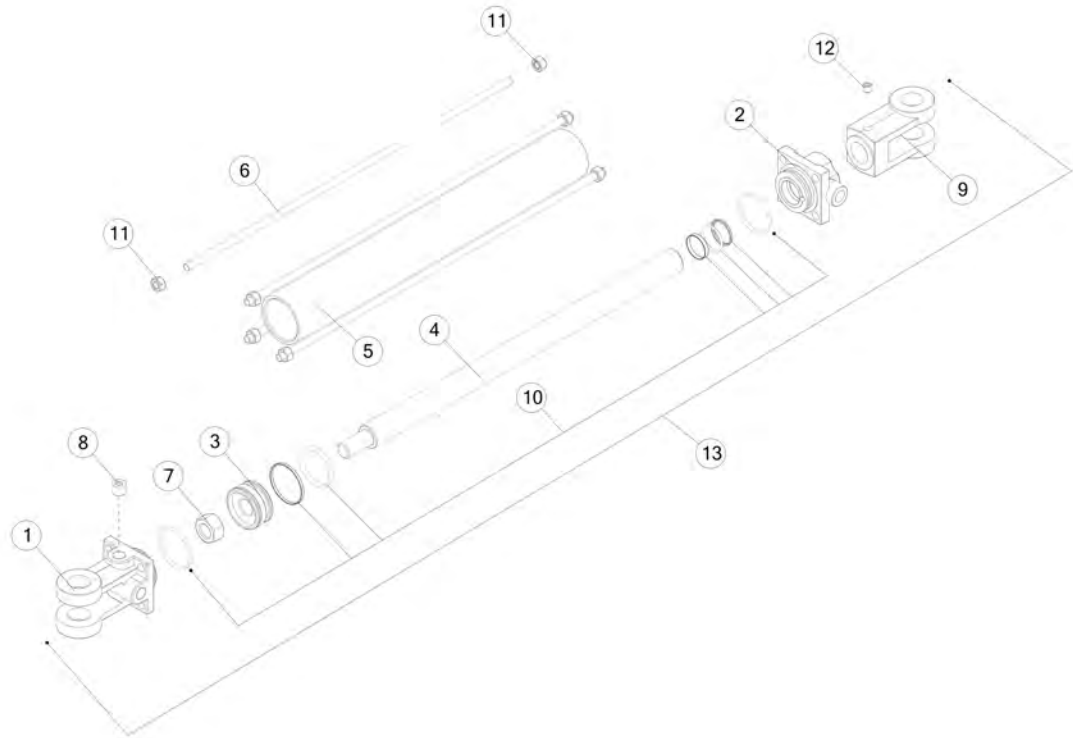


<u>ITEM</u>	<u>QTY</u>	<u>PART #</u>	<u>DESCRIPTION</u>
1	1	17G88	DRIVE SHAFT SHIELD
2	3	A32	3/8" X 1-3/8" SQUARE KEY
3	1	17G89	DRIVE SHAFT
4	1	17G90	SPACER
5	5	17G91	SPACER
6	2	23N122	6T SPROCKET
7	7	17G92	APRON CHAIN 15 SLATS, 188 LINKS
8	1	17G93	SLAT W/ ATT. LINKS
9	2	S55	T-ROD STANDARD LINK
10	2	A20	1/2" SQUARE NUT
11	1	17G94	CHAIN SLIDE ANGLE LH
12	1	17G95	CHAIN SLIDE ANGLE RH
13	1	17G96	T-ROD SLIDE LH
14	1	17G97	T-ROD SLIDE RH
15	4	YBCR16030	CARR. BOLT, 1/2" X 2-1/2" GR. 5
16	2	YBHH16190	BOLT, 1/2" X 9-1/2" GR. 5



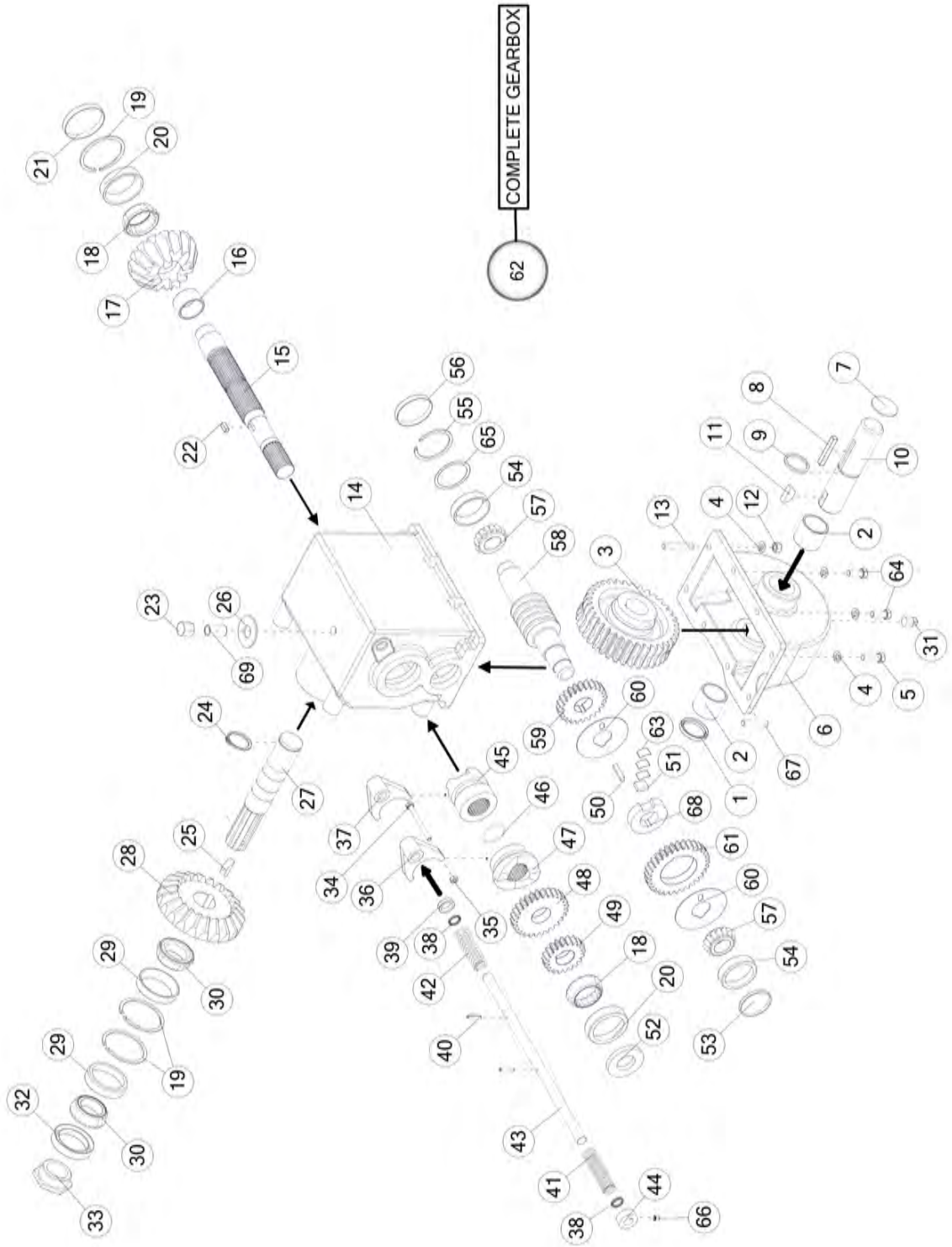
# FIGURE 7

## OPTIONAL HYDRAULIC ENDGATE CYLINDER



<u>ITEM</u>	<u>QTY</u>	<u>PART #</u>	<u>DESCRIPTION</u>
1	1	23N142A	CLEVIS CAP FOR 2.0" CYLINDERS
2	1	56174	ROD CAP
3	1	56180	PISTON FOR 2" CYLINDER
4	1	23N145A	ROD
5	1	23N146	CYL. TUBE
6	4	23N147	SHAFT, RND, 0.33 X 20.19
7	1	23N148	PISTON NUT
8	1	23N149	PLUG
9	1	23N150A	ROD CLEVIS
10	1	56187	SEAL KIT FOR 2" CYLINDER
11	8	YNHX12006	NUT, HEX, 3/8-24, NA, G2, ZC
12	1	YSSO12015	SET SCREW, SOCKET, 3/8-24 X 3/8
13	1	56015	2" X 16" HYDRAULIC CYLINDER

# FIGURE 8 GEARBOX



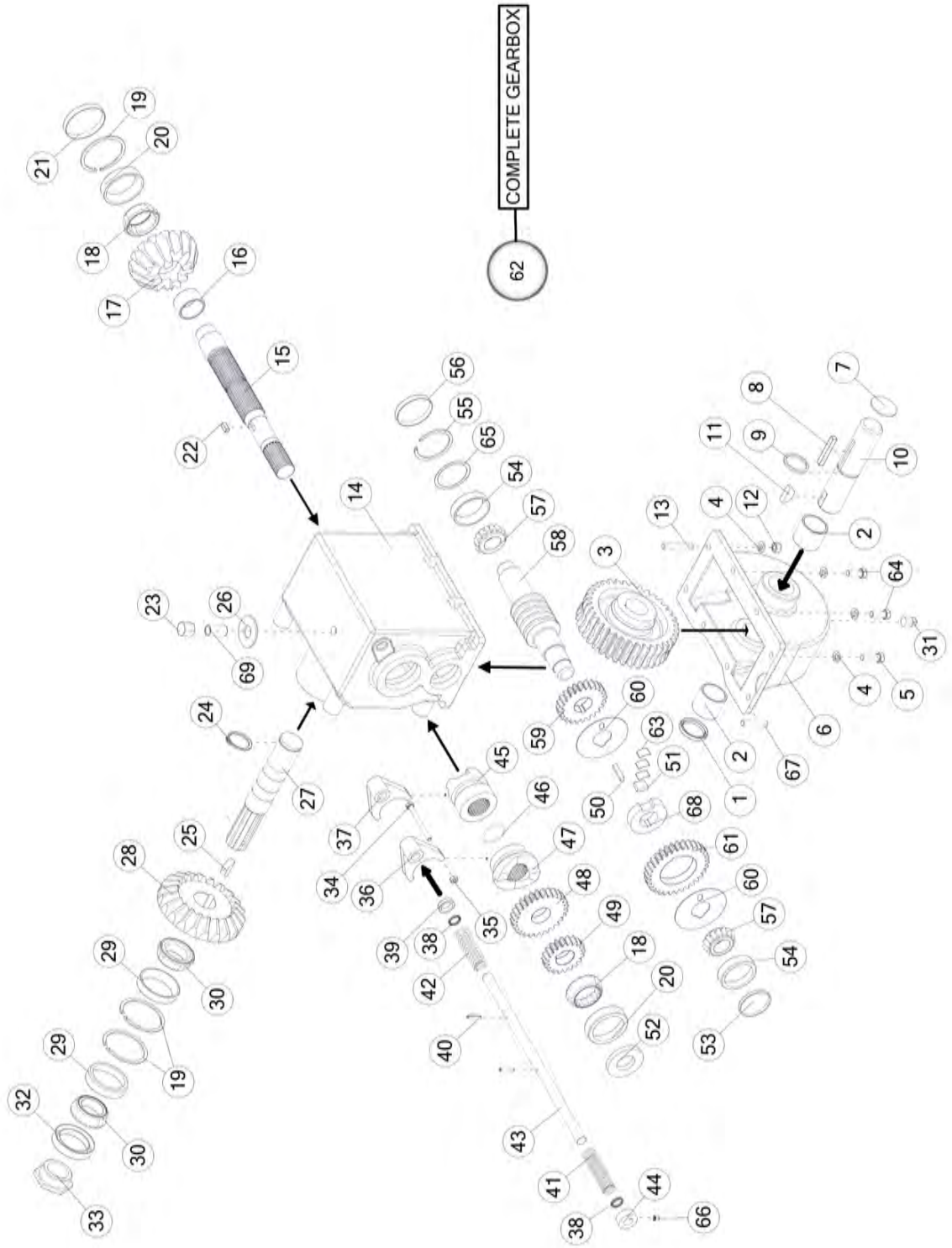
## **FIGURE 8**

### **GEARBOX**

<b><u>ITEM</u></b>	<b><u>QTY</u></b>	<b><u>PART #</u></b>	<b><u>DESCRIPTION</u></b>
1	1	17G133	SEAL, 1.88 X 1.50 X 0.25
2	2	17G134	BSH, 1.75 X 1.50 X 1.50, BRZ
3	1	17G137	GEAR, WORM, 36T, 6 PITCH, 2 SPEED GEAR BOX
4	8	YWLO12005	WASHER, LOCK, 3/8
5	2	YBHH12035	BOLT, HEX, 3/8-16 X 1-1/4, G5, ZC
6	1	17G107	CAST, HSG, GRBX, LOWER
7	1	17G139	CAP, 1.75
8	1	17G132	KEY, SQ, 0.31 X 0.31 X 2.25
9	1	17G135	SNAP RING, 1.424 ID X .125 WT
10	1	17G136	SHAFT, RND, 1.50, 7.093, WORM GEAR OUTPUT
11	1	5B9	KEY, WDF, 0.38 X 0.53 X 1.25
12	2	YNHX12005	HEX NUT, 3/8-16 GR 2
13	2	17G140	SCR, STUD, 0.38-16 X 1.81
14	1	17G99	CAST, HSG, GRBX, UPPER
15	1	17G108A	SHAFT, RND, 1.75, 12.82, PTO INPUT
16	1	17G111	BSH, 1.75 X 1.5 X 1.0, BRZ
17	1	17G110	GEAR, BEVEL, 16T, WITH 4 JAW
18	2	G18	BRG, 2.24 X 1.58 X .82, TAPER
19	3	G55	RING, SNAP, INTERNAL, 3.02 X 2.64
20	2	18VB25	BEARING, ROLL, CUP, 2.72,
21	1	G68	CAP, 2.72
22	1	17G116	KEY, SQ, 0.25 X 0.25 X 0.63
23	1	17G58	VENT CAP
24	1	12V62	HEAVY DUTY EXTERNAL SNAP RING, 1.50" KEY,
25	1	G61	WDF, 0.38 X 0.55 X 1.25
26	1	YWFL24005	WASHER, FLAT, 3/4 IN USS
27	1	17G104	SHAFT, RND, 1.50, 9.0, BEATER OUTPUT GEAR,
28	1	17G101	BEVEL, 22T
29	2	17G102	BEARING, ROLL, CUP, 2.72,
30	2	17G103	BRG, 2.35 X 1.50 X 0.75, TAPER
31	1	G65	PLUG, PIPE 3/8-18 NPT

# FIGURE 8

## GEARBOX



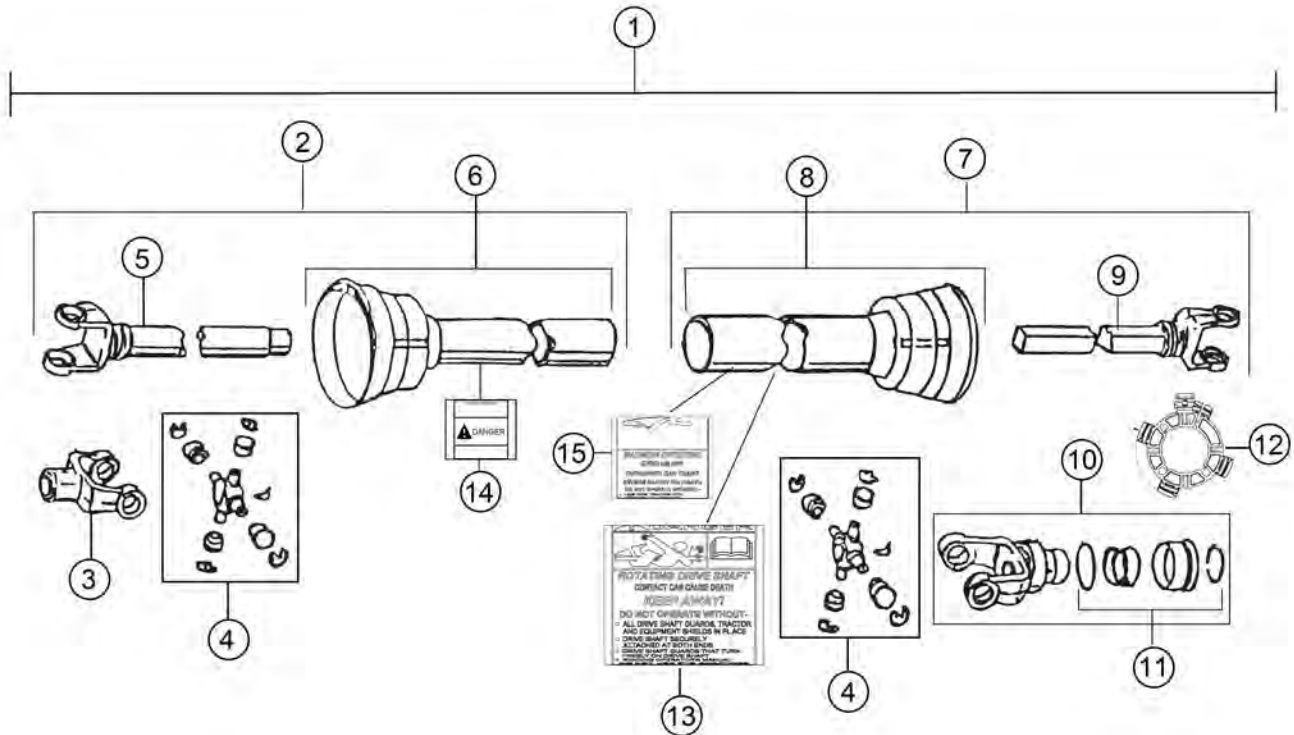
## FIGURE 8

### GEARBOX

<u>ITEM</u>	<u>QTY</u>	<u>PART #</u>	<u>DESCRIPTION</u>
32	1	17G105	SEAL, 2.72 BORE, 2.00 SHAFT
33	1	17G106	NUT, HEX, 1.50-18, NA
34	1	YBHH08090	BOLT, 1/4 X 3 GR 2 FULL THREAD
35	1	YNHX08007	HEX NUT, 1/4-20 GR 5
36	1	17G125	YOKE, SHIFTER, HIGH SPEED
37	1	17G129	YOKE, SHIFTER, BEATER
38	2	17G121	SEAL, .813 BORE X .625 SHAFT
39	1	17G122	TUBE, RND, STR, 1.06 X 0.14 X 0.25
40	2	17G123	PIN, ROLL, 0.19 X 1.0, ZN
41	1	17G128	SPRG, COIL, 3.36, COMP
42	1	17G130	SPRG, COIL, 3.13, COMP
43	1	17G131	SHAFT, RND, 0.625, 15.0, SHIFTER ROD
44	1	17G171	COLLAR, LOCK, 1.25X.629,
45	1	17G109	BEATER CLUTCH, 2 SPEED GEAR BOX
46	1	17G169A	RING, SNAP, 1.57 X 1.38
47	1	17G119	HIGH SPEED CLUTCH, 2 JAW
48	1	17G118	GEAR, 28T, HIGH SPEED W/2 JAWS GEAR,
49	1	17G115	LOW SPEED, 2 SPEED GEAR BOX
50	1	S135	KEY, SQ, 0.25X0.25X1.25
51	1	17G124	KEY, 0.75 X 0.25 X 0.56
52	1	S136	SEAL, OIL, 1.25 ID X 2.44 OD X .31 THK
53	1	17G100	CAP, 2.14
54	2	3G18	BEARING, ROLL, CUP, 2.54,
55	1	3G19	RING, SNAP, INTERNAL, 2.59 X 2.22
56	1	G90	CAP
57	2	L3G24	BRG, 1.75 X 1.13 X 0.81, TAPER
58	1	17G120	SHAFT, RND, 2.33, 9.84
59	1	17G117	GEAR, HIGH SPEED, 2 SPEED GEARBOX
60	2	17G112	WASH, FLAT, 3.50, 1.26
61	1	17G113	LOW SPEED GEAR, 2 SPEED GEARBOX
62	1	17G142	ASSM, 2 SPEED GEARBOX
63	3	17G126	SPRG, DOG, 0.552 X 0.75
64	4	YBHH12010	BOLT, HEX, 3/8-16 X 1, G5, ZC
65	1	G92	SHIM, STAINLESS, 2.40" OD X 2.00" ID, X .010
66	1	YSKP10015	SET SCREW, SOCKET, KNURLED CUP PT, 5/16 X 5/16
67	1	17G138	SCR, STUD, 0.38-16 X 2.0
68	1	17G114	CLUTCH, LOW SPEED, 2 SPEED GEARBOX
69	1	23N288	PIPE NIPPLE, 0.38 X 1.25

# FIGURE 9

## PTO ASSEMBLY

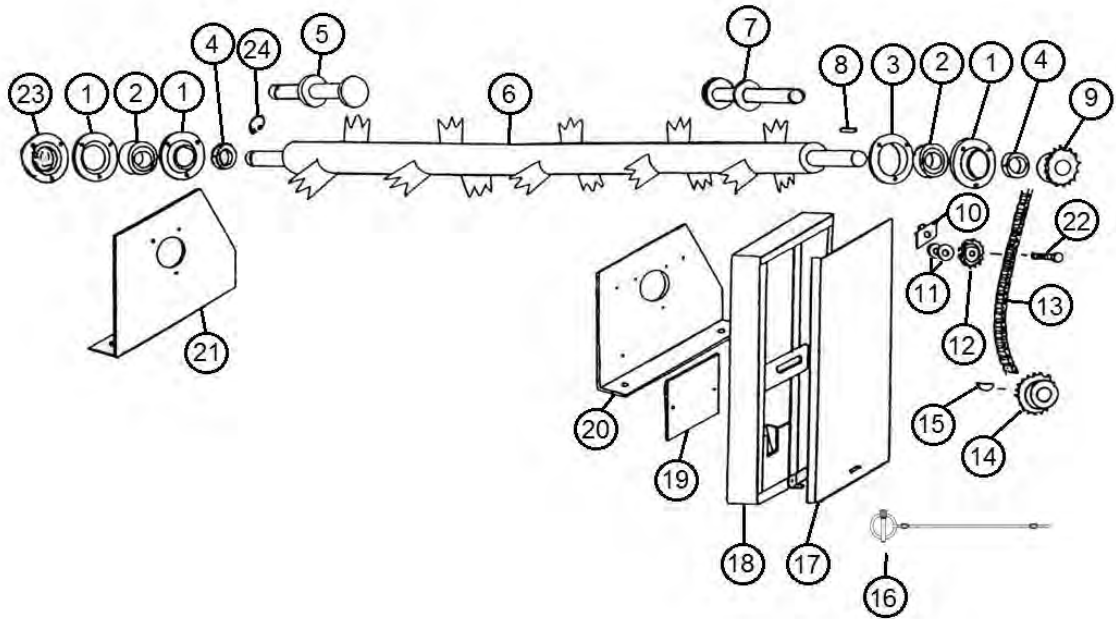


<u>ITEM</u>	<u>QTY</u>	<u>540 RPM</u>	<u>DESCRIPTION</u>
1	1	23N152	COMPLETE PTO ASS'Y W/SHIELDS
2	1	23N153	MACHINE HALF PTO W/SHIELD
3	1	G1R35	YOKE 1-1/4"
4	2	14NW	14R CROSS & BEARING KIT
5	1	23N155	YOKE AND TUBE
6	1	23N156	INNER GUARD
7	1	23N157	TRACTOR HALF PTO W/SHIELD
8	1	23N158	OUTER GUARD
9	1	23N159	YOKE AND SHAFT
10	1	23N162	PTO LOCK YOKE ASSEMBLY (540)
11	1	S225	SPRING-LOK REPAIR KIT
12	1	16SV181	NYLON REPAIR
13	1	16SV283	DECAL, PTO SAFETY
14	1	16SV388	DECAL, PTO SAFETY INNER GUARD
15	1	16SV384	SAFETY SIGN 540 RPM
*	1	S402	ADMA SAFETY MANUAL

\* MEANS NOT SHOWN

# FIGURE 10

## OPTIONAL TOP BEATER



<u>ITEM</u>	<u>QTY</u>	<u>PART#</u>	<u>DESCRIPTION</u>
1	2	F114A	FLANGE, 1-1/4" W/45 DEG. ZERK
2	2	12N122	BEARING WITH LOCK COLLAR BEARING
3	1	F114	FLANGE
4	1	F16	LOCK COLLAR
5	1	23N164	LH STUB SHAFT
6	1	17G180	2ND BEATER
7	1	17G186	RH STUB SHAFT
8	1	G23B	5/16" X 1-3/8" SQUARE KEY
9	1	D18	16T SPROCKET
10	1	22G34	NUT BRACKET
11	1	YWFL16005	WASHER, FLAT, 1/2" USS
12	1	12N42	IDLER SPROCKET
13	1	22G35	#60 CHAIN 80 PITCHES
14	1	F13	20T SPROCKET (60B20)
15	1	5B9	3/8" X 1-1/4" WOODRUFF KEY
16	1	S122	LANYARD, CLIP PIN CABLE
17	1	22G36	COVER
18	1	17G181	SHIELD
19	1	22G38	SHIELD
20	1	17G182	RH PANEL
21	1	17G183	LH PANEL
22	1	YBHH16080	BOLT, 1/2" X 2-1/2" GR. 5
23	1	77318	BEARING FLANGE
24	1	F73	SNAP RING









**H&S Manufacturing products are approved for the  
FEMA SEAL OF QUALITY**

**P.O. BOX 768, MARSHFIELD, WI 54449  
(715) 387-3414 FAX (715) 384-5463  
[www.hsmfgco.com](http://www.hsmfgco.com)**